

# PRODUCT CLASS

**Type C**

# T6 SQUARE LINE EYE SPLICE

**6 strand braid hand spliced**

**T6  
SQUARE LINE**

**CORE :** Polyester HT  
**COVER :** Assente

**CORE :** POLIESTER HT



Abrasion



**COVER TECH MIX :** ASSENTE

## FIBER CHARACTERISTICS

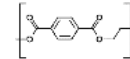
The fiber's components of this product are : **POLYESTER HT**

- **Polyester** it's polymers produced by mixing ethylene glycol and terephthalic acid.



FIBER'S PROPERTY	UDM	POLYESTER HT	-	-	-
Tenacity	gr/den	9,3	-	-	-
Specific gravity	gr/cm <sup>3</sup>	1,38	-	-	-
Elongation at break	%	14,6	-	-	-
Tensile modulus	gr/den	120	-	-	-
Melting point	°C	256	-	-	-

CORE



POLYESTER HT

COVER

ABSENTE



## BRAID CHARACTERISTICS

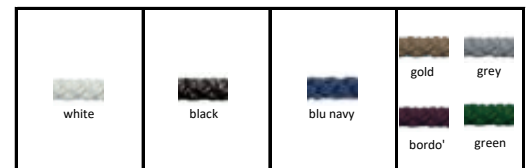
CORE			COVER ( it's a media of the of all fiber's components )		
Tenacity	9,3	gr/den	Abrasion resistance	-	gr/den
Creep	10	%	Peack of temp.	-	°C
Module	120	gr/den	Grip	-	frict. coeff.
Weight	1,38	gr/cm3	Weight	-	gr/cm3

## DISCOUNT SYSTEM

SHOP			WHOLESALE		
Price x pc.	sc.	%	Price x pc.	sc.	%
-	-	-	-	-	-
-	-	-	-	-	-

## APPLICATIONS , TECHNICAL DATA , PRICE

- Mooring line with eye splice



∅	weight	breacking load	standard lenght	eye lenght	∅	white	black	blu navy	colors ( on request )
mm	gr/mt	daN	mt	cm	mm	€/mt	€/mt	€/mt	€/mt
10	68,4	1.499	6	45	10	36,7 €	38,0 €	41,4 €	42,4 €
12	99,0	2.430	7	45	12	41,2 €	43,0 €	47,5 €	48,8 €
14	133,2	3.159	9	45	14	52,6 €	55,4 €	62,3 €	64,3 €
16	175,5	4.050	11	45	16	71,7 €	76,1 €	87,0 €	90,1 €
18	220,5	5.184	12	45	18	83,2 €	88,5 €	101,8 €	105,5 €
20	272,7	6.804	13	75	20	102,9 €	109,9 €	127,7 €	132,6 €
22	330,3	7.938	14	75	22	127,0 €	136,2 €	159,1 €	165,6 €
24	393,3	9.315	15	75	24	153,8 €	165,5 €	194,7 €	202,8 €
-	-	-	-	-	-	-	-	-	-
-	-	-	-	-	-	-	-	-	-
-	-	-	-	-	-	-	-	-	-
-	-	-	-	-	-	-	-	-	-
-	-	-	-	-	-	-	-	-	-
-	-	-	-	-	-	-	-	-	-
-	-	-	-	-	-	-	-	-	-
-	-	-	-	-	-	-	-	-	-
-	-	-	-	-	-	-	-	-	-
-	-	-	-	-	-	-	-	-	-

Shock absobtion at 50% of breacking load.... 9,50%

\* Linear breaking load in according to DIN EN ISO 2307